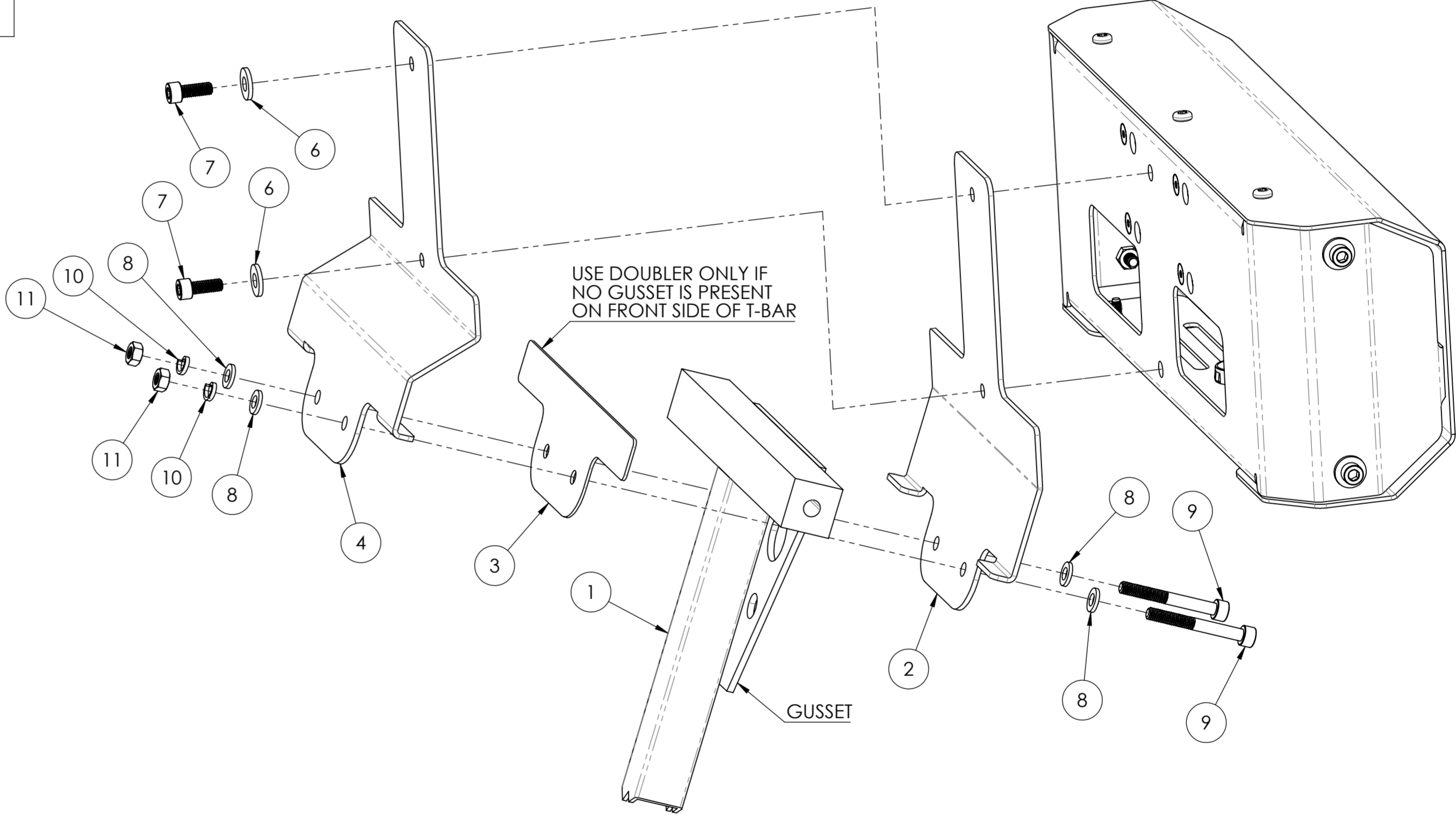


ITEM NO.	PART NUMBER	DESCRIPTION	QTY.
1	T-BAR		1
2	SX-SBT-TBM-R.A	T-BAR MOUNT, REAR	1
3	SX-SBT-TBM-D.A	T-BAR MOUNT, DOUBLER	1
4	SX-SBT-TBM-F.A	T-BAR MOUNT, FRONT	1
5	SX-SBT ASM	G-BELT UNIT	1
6	97416A119	BLACK-OXIDE STEEL SAE WASHER FOR 1/4" SCREW SIZE, 0.281" ID, 0.625" OD	6
7	91290A321	BLACK-OXIDE ALLOY STEEL SOCKET HEAD SCREW, M6 X 1 mm THREAD, 16 mm LONG	6
8	98269A450	BLACK-OXIDE 18-8 STAINLESS STEEL WASHER FOR M6 SCREW SIZE, 6.4 mm ID, 12 mm OD	4
9	91290A340	BLACK-OXIDE ALLOY STEEL SOCKET HEAD SCREW, M6 X 1 mm THREAD, 50 mm LONG, PARTIALLY THREADED	2
10	93711A500	BLACK-OXIDE 18-8 STAINLESS STEEL SPLIT LOCK HEAD WASHER FOR 1/4" SOCKET HEAD SCREWS, 0.26" ID, 0.363" OD	2
11	98676A400	BLACK-OXIDE 18-8 STAINLESS STEEL HEX NUT, M6 X 1 mm THREAD	2

REVISIONS				
ZONE	REV.	DESCRIPTION	DATE	APPROVED
	A	RELEASE FOR PRODUCTION	4/14/20	



G-BELT T-BAR MOUNTING INSTRUCTIONS (SEAT AND CHASSIS NOT SHOWN FOR CLARITY):

1. POSITION FRONT AND REAR MOUNTS AND DOUBLER (IF REQUIRED--SEE NOTE) ON FRONT AND BACK SIDES OF T-BAR.
2. INSTALL MOUNTS AND DOUBLER (IF REQUIRED) USING SCREWS, WASHERS, LOCK WASHERS, AND NUTS. FINGER TIGHTEN ONLY.
3. REMOVE HARDWARE PREINSTALLED INTO FACE OF G-BELT UNIT AND USE IT TO MOUNT UNIT TO MOUNTS.
4. TIGHTEN HARDWARE WHICH PASSES THROUGH T-BAR GUSSET(S) AND DOUBLER (IF REQUIRED). DO NOT OVERTIGHTEN.
5. THERE ARE SEVERAL OPTIONS FOR THREADING AND ANCHORING SHOULDER HARNESSES. PLEASE REFER TO PHOTOS POSTED IN OWNERS' CLUB FORUM.

UNLESS OTHERWISE SPECIFIED: DIMENSIONS ARE IN MILLIMETERS		FINISH:		DEBURR AND BREAK SHARP EDGES		DO NOT SCALE DRAWING		REVISION A	
SURFACE FINISH:									
TOLERANCES:									
LINEAR:									
ANGULAR:									
DRAWN T. BETTENHAUSEN		SIGNATURE		DATE 4/14/20		TITLE: G-BELT T-BAR MOUNT ASSY			
CHK'D						DWG NO. SX-SBT-TBM.A		A2	
APPV'D						SCALE:1:2		SHEET 1 OF 1	
MFG									
Q.A.									
				MATERIAL:					
				WEIGHT:					