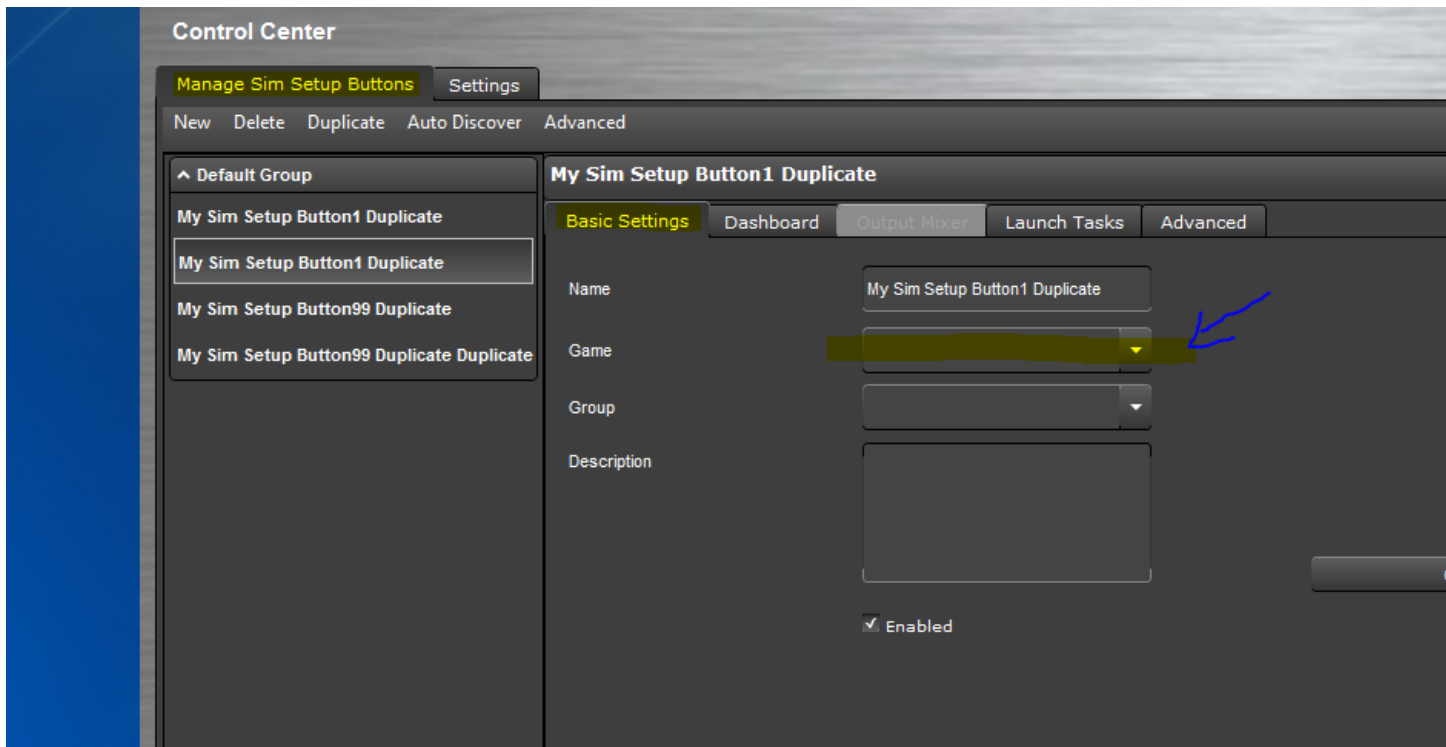


Validate Sim Setup Button

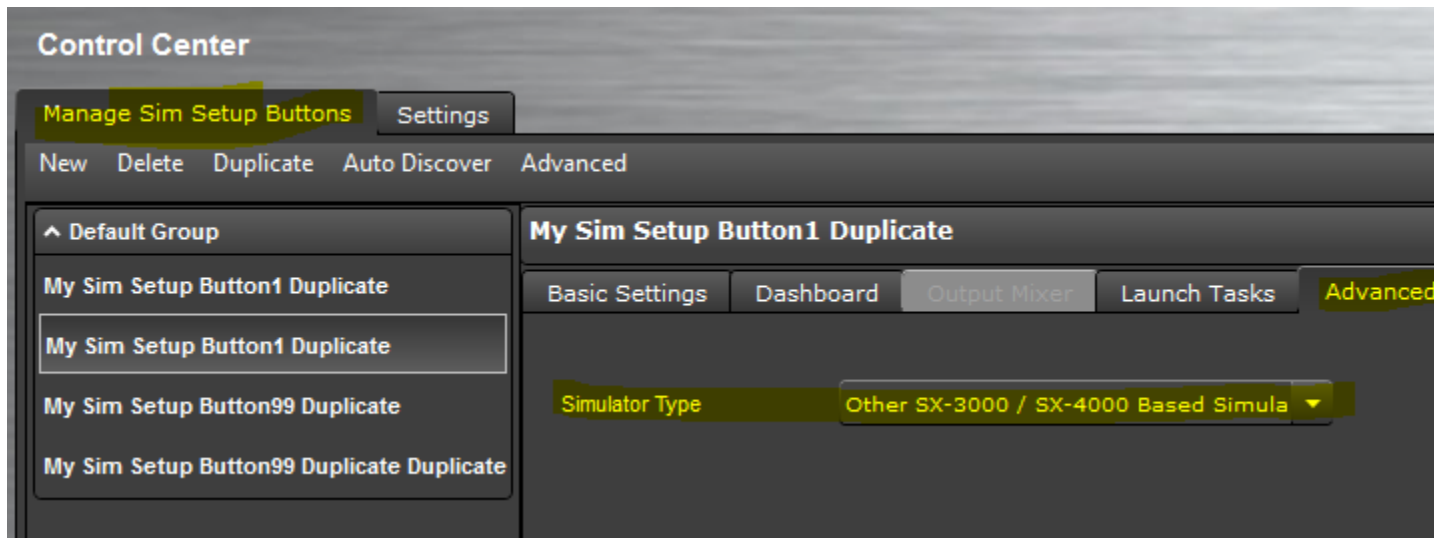
1. Navigate to the Control Center



2. On the 'Manage Sim Setup Buttons' main tab and 'Basic Settings' sub-tab, be sure the correct game is associated with your sim setup button. *There is a window pane to the left to choose the Sim Setup button you wish to view.



3. On the 'Manage Sim Setup Buttons' main tab and 'Advanced sub-tab, double-check the Sim Setup button is assigned the correct simulator type.



4. On the 'Settings' main tab, look to the 'Games area at the bottom. You can navigate to the game you wish to view in the bottom left window pane. Under 'Basic Settings'. Double check that the Game Plugin is indeed the plug-in for the game. Double check that the Game exe is indeed the executable that starts the desired game

Control Center

Manage Sim Setup Buttons

Settings

^ Appearance

Skin Theme

Skin

Default

Skin Overrides

Background Image

(Skin Default)

Background Music

(Skin Default)

Miscellaneous Appearance Settings

Show Control Center at Startup

Main window is always on top

Show Dash In Window

Show Dashboard When Game Starts

Settings window is always on top

Show Dash Window At Startup

^ Games

Add

Delete

Duplicate

Auto Search

Basic Settings

Name

Game Plugin

Game Exe



Description

Advanced

Parameters

Wait On

UDP Forward To