



SIMXPERIENCE

SIMVIBE SETUP GUIDE

System Requirements

- Quad Core (2.6Ghz or higher) processor
- 4gb RAM minimum
- One or two 5.1 PCI sound cards in addition to your primary sound card.
- One to eight bass transducers
- Amplifier capable of one to eight Channels
- Supported PC simulation game(s)

Understanding SimVibe Setup Options

Before you begin the SimVibe software installation, you should understand the modes of SimVibe operation, determine which options you will utilize and prepare both Windows and your simulator for use with SimVibe.

SimVibe has two components / modes of operation:

Chassis (Multi-Dimensional)

The multi-dimensional chassis feature has been optimized for operation at all four corners of the simulator and provides for realistic vibration origination and resonation.

An optimal configuration will require a 5.1 sound card, four bass transducers and a four channel audio amplifier. It is however possible to utilize a 2-channel configuration (left / right) as SimVibe Chassis will honor the windows sound configuration settings.

SimVibe Extensions (Localized Feedback)

SimVibe Extensions allow for localized transducer placement. This mode of operation is not multi-dimensional but may be suitable for some simulator designs or as an addition to SimVibe chassis.

Placement options include:

- Seat
- Pedals
- Shifter

An optimal configuration for this mode will require a 5.1 sound card, three bass transducers and a three channel amplifier. It is however possible to utilize only 1 channel such as seat and simply place a single bass transducer beneath the seat.

For performance reasons and to enable future enhancements, each SimVibe mode requires its own 5.1 sound card in addition to your PC's primary sound card.



You can choose one or both of these SimVibe modes.

Connecting to the Sound Card

In an effort to facilitate the ability to share 'Sim Setups' with others, SimVibe specifies a fixed sound channel to SimVibe channel mapping as follows.

Chassis Mode

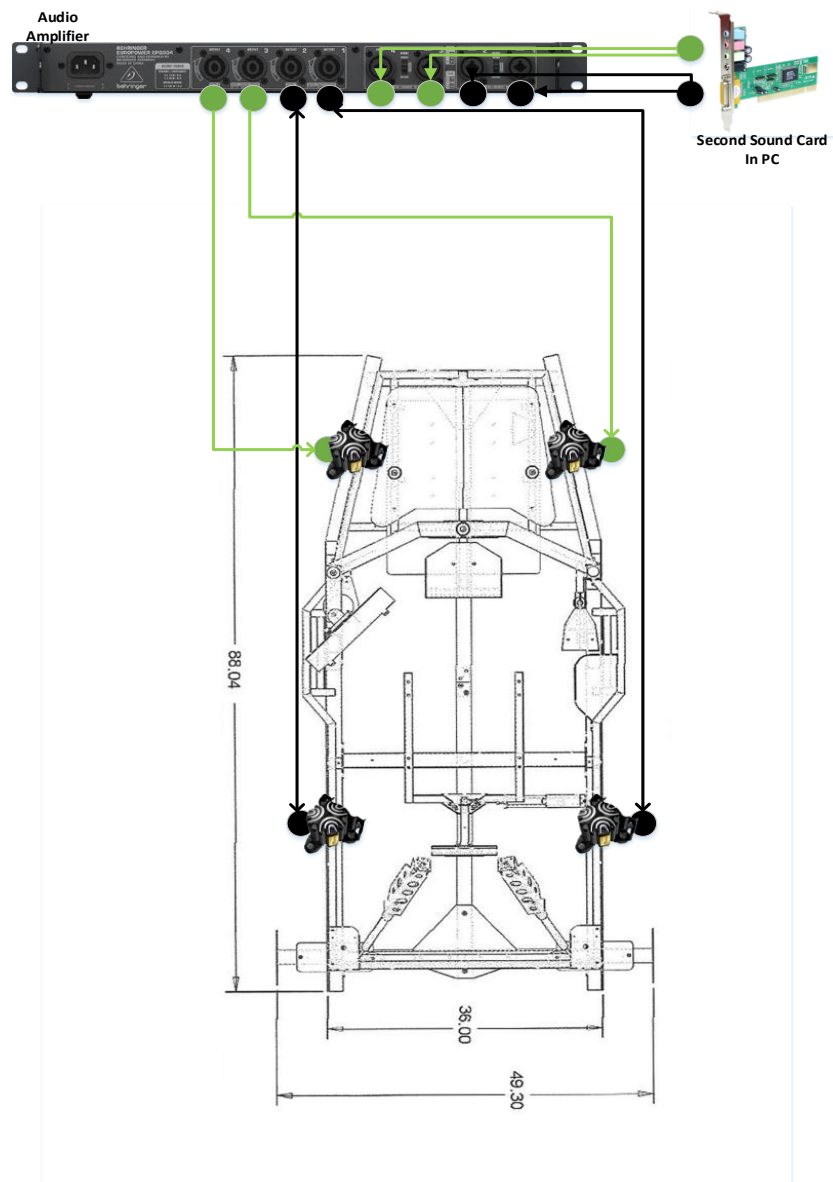
GREEN – Front Left / Front Right

BLACK – Rear Left / Rear Right

Localized Feedback Mode

GREEN – Seat (left channel), Shifter (right channel)

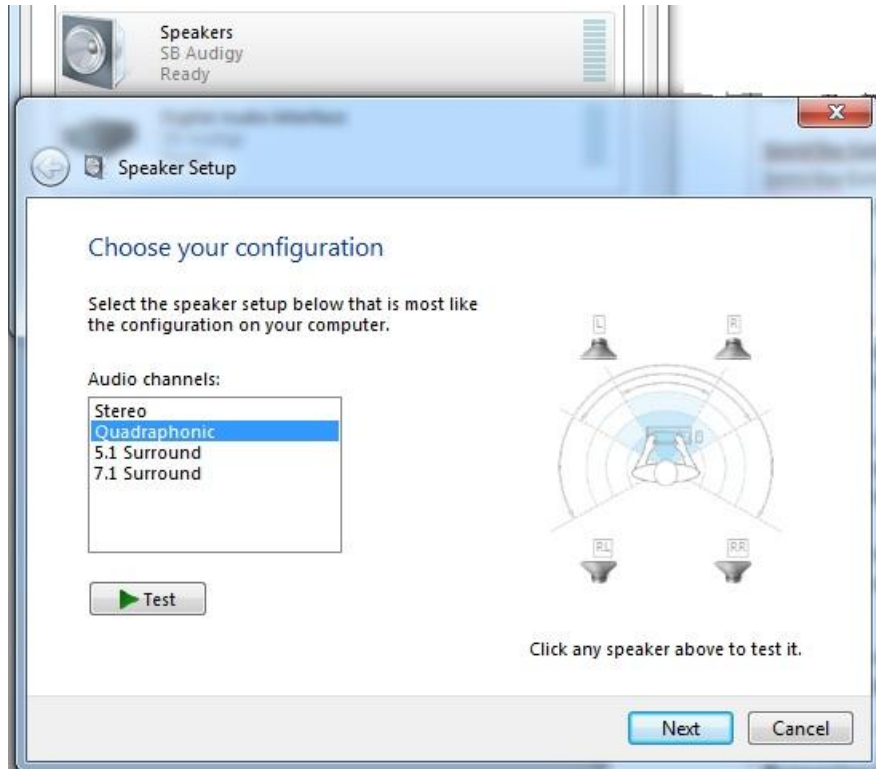
BLACK – Future Use (left channel), Pedals (right channel)



Preparing Windows For SimVibe

It is assumed that you have the requisite number of sound cards installed for the SimVibe mode(s) you have chosen and that your amplifier and transducers are properly connected and functioning.

- 1) Double-Click 'Sound' in the Windows Control Panel.
- 2) Highlight the Speakers that you will use for SimVibe Chassis mode and click the configuration button
- 3) Select Quadrophonic (as depicted below) and continue to test each speaker. When prompted, be sure to tell Windows that your speakers are full range.



- 4) Highlight the speakers that you will use for SimVibe Localized Extensions (if any) and select either 5.1 or 7.1 mode. Be sure to select that your speakers are full range when prompted.



Failure to configure Windows / SimVibe Chassis for quadrophonic mode will result in increased CPU utilization and an overall loss in sharpness.



If your sound card offers 3D enhancements, you may need to disable them to achieve maximum realism and accuracy.

Installing Sim Commander 3 with SimVibe

- 1) Obtain a copy of Sim Commander 3 Lite Edition and a License Key from SimXperience.com
- 2) Run Setup.exe
- 3) Run Sim Commander 3 Lite
- 4) Install your license code (This is important! SimVibe features will not be available unless a corresponding license code has been installed. Do not install as a trial version!)
- 5) Select your simulator type. If you do not have a motion simulator, this will be 'Motionless Cockpit'.
- 6) Enable your chosen SimVibe Modes and assign the corresponding sound cards to them.
- 7) Finish the setup wizard
- 8) Default SimVibe 'Sim Setups' have been created for each game that was detected in its default location. Simply double-click your favorite game from the menu to drive with SimVibe enabled.

Video tutorials of SimVibe Installation and operation can be found at <http://www.SimXperience.com>